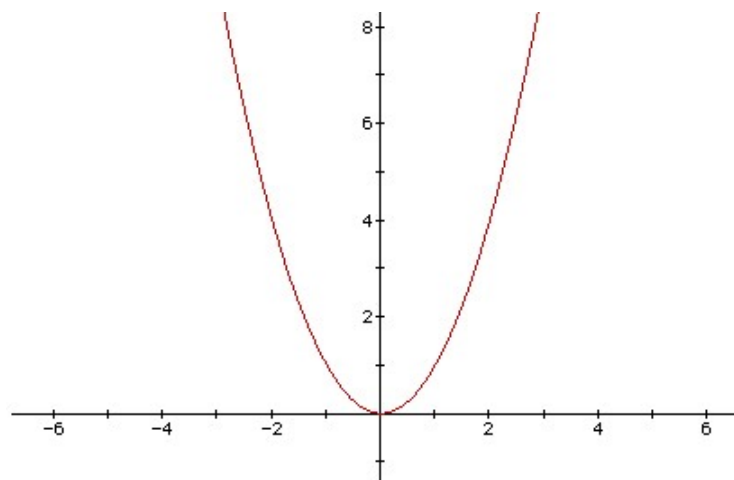


5009 Error Curves

Josephina is a clever girl and addicted to Machine Learning recently. She pays much attention to a method called Linear Discriminant Analysis, which has many interesting properties.

In order to test the algorithm's efficiency, she collects many datasets. What's more, each data is divided into two parts: training data and test data. She gets the parameters of the model on training data and test the model on test data.

To her surprise, she finds each dataset's test error curve is just a parabolic curve. A parabolic curve corresponds to a quadratic function. In mathematics, a quadratic function is a polynomial function of the form $f(x) = ax^2 + bx + c$. The quadratic will degrade to linear function if $a = 0$.



It's very easy to calculate the minimal error if there is only one test error curve. However, there are several datasets, which means Josephina will obtain many parabolic curves. Josephina wants to get the tuned parameters that make the best performance on all datasets. So she should take all error curves into account, i.e., she has to deal with many quadric functions and make a new error definition to represent the total error. Now, she focuses on the following new function's minimal which related to multiple quadric functions.

The new function $F(x)$ is defined as follow:

$$F(x) = \max(S_i(x)), i = 1 \dots n. \text{ The domain of } x \text{ is } [0, 1000]. S_i(x) \text{ is a quadric function.}$$

Josephina wonders the minimum of $F(x)$. Unfortunately, it's too hard for her to solve this problem. As a super programmer, can you help her?

Input

The input contains multiple test cases. The first line is the number of cases T ($T < 100$). Each case begins with a number n ($n \leq 10000$). Following n lines, each line contains three integers a ($0 \leq a \leq 100$), b ($|b| \leq 5000$), c ($|c| \leq 5000$), which mean the corresponding coefficients of a quadratic function.

Output

For each test case, output the answer in a line. Round to 4 digits after the decimal point.

Sample Input

```
2
1
2 0 0
2
2 0 0
2 -4 2
```

Sample Output

```
0.0000
0.5000
```